

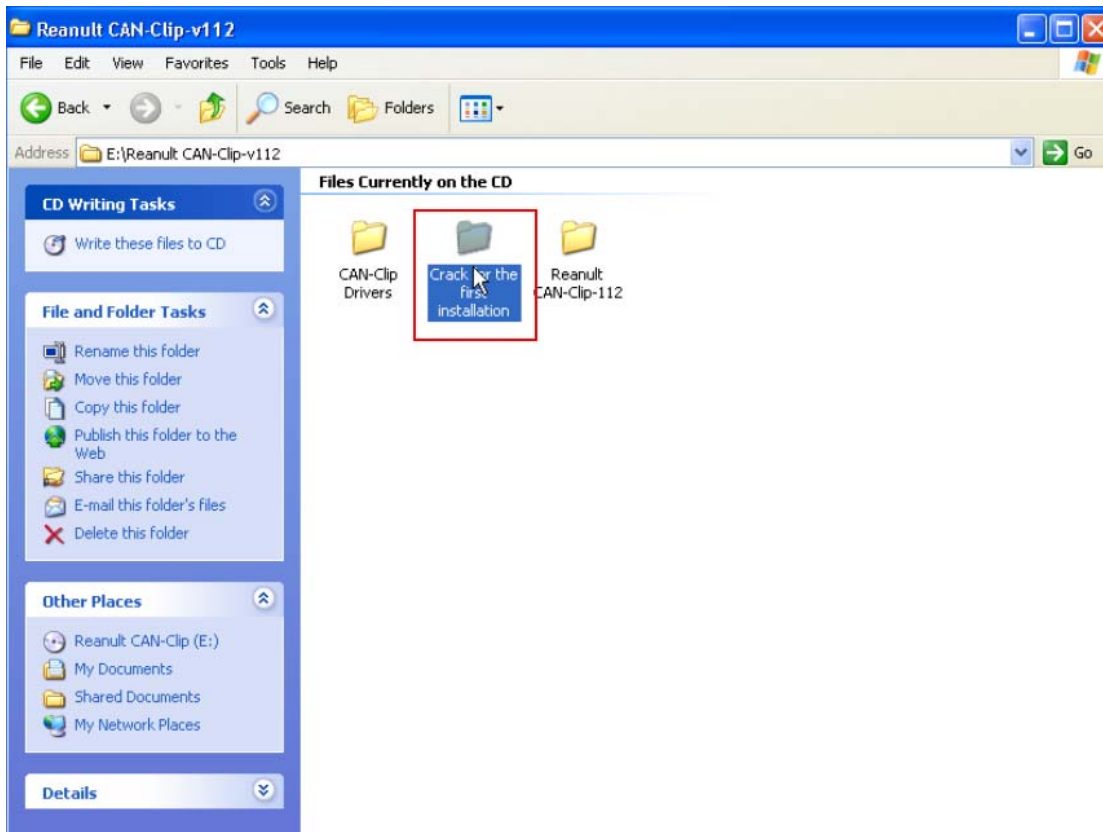
Renault Clip v112 setup requirements and instructions

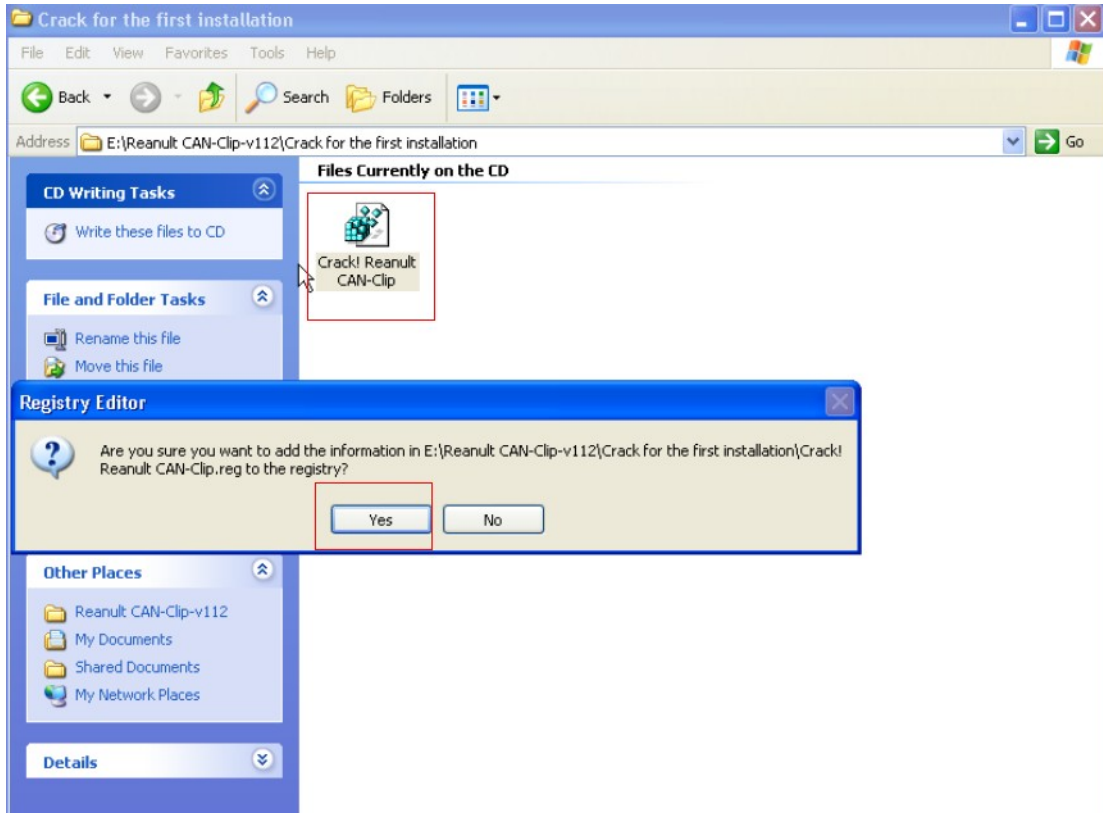
1, Renault Clip v112 installation requirements

- 1) Install Renault can clip V112 software in X(sp2 or sp3)
- 2) Set system language as English (United States)
- 3) install the software to C: //, and C:// has to be 10GB space free
- 4) Computer CPU:2.0 GHZ
- 5) Memory: 1GB

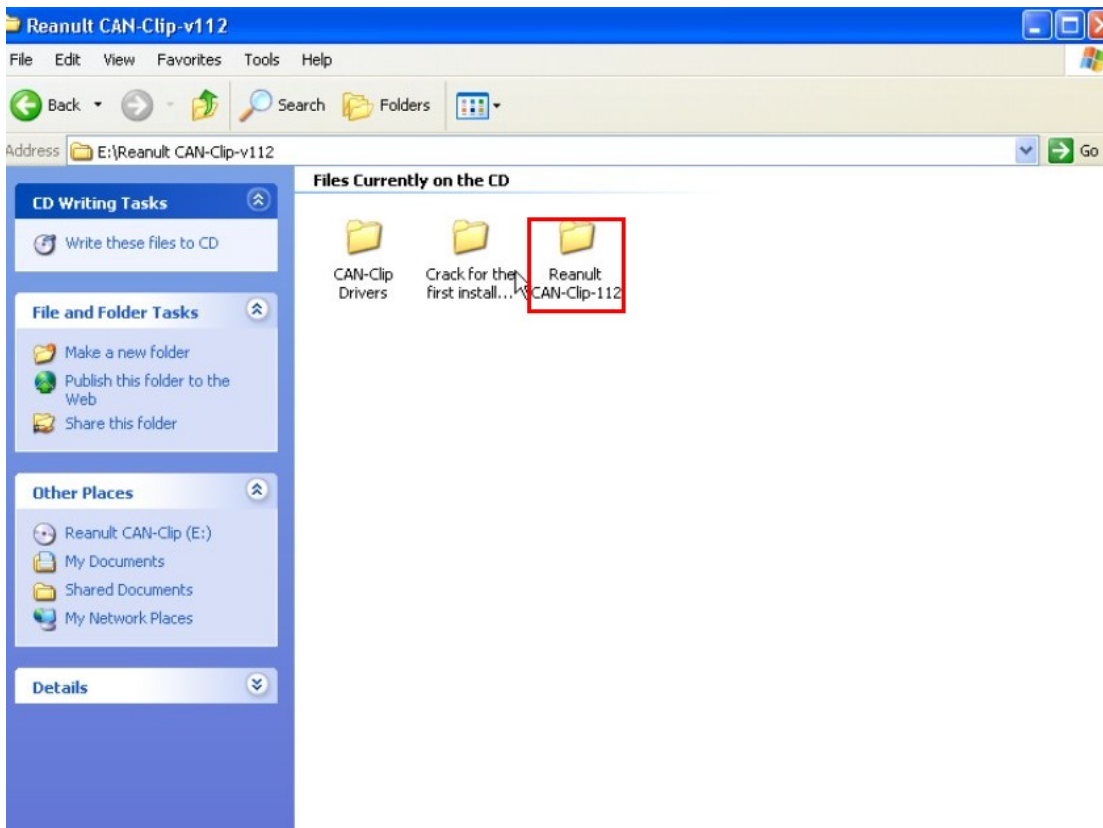
2, Renault Clip v112 setup instructions

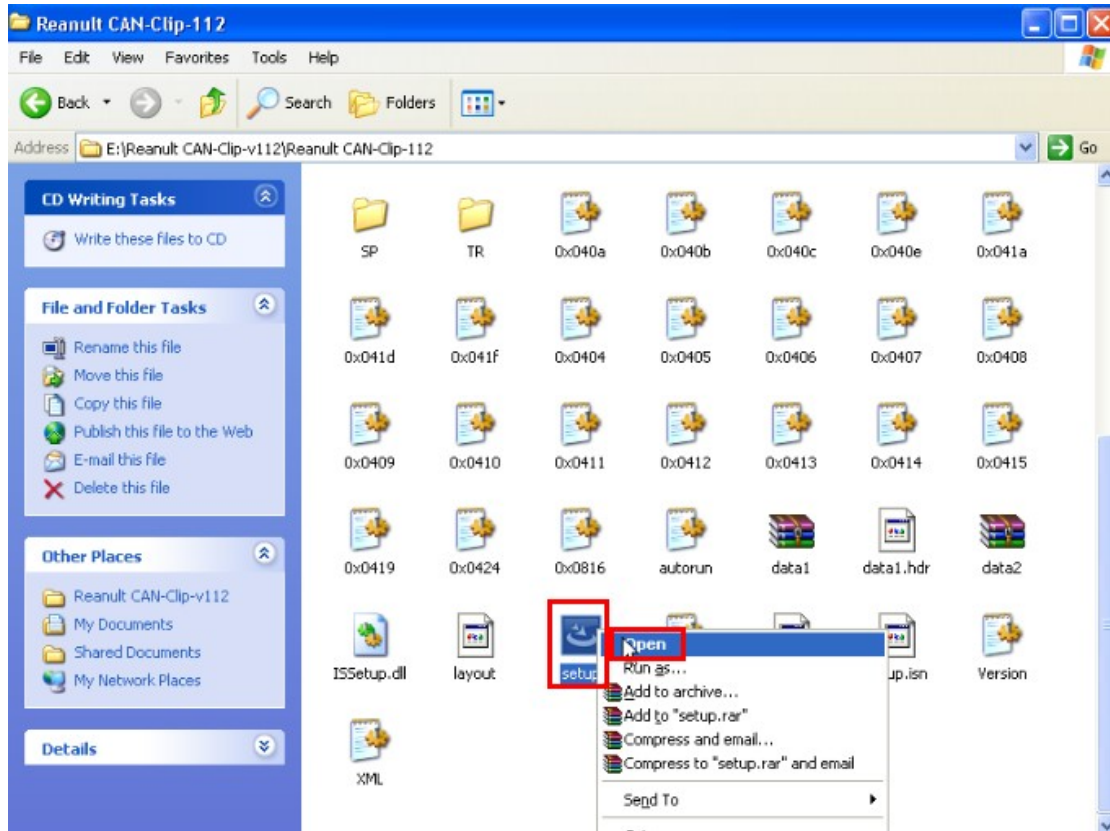
- 1) Open software “Renault CAN-Clip-v112” and click “Crack for the first installation”



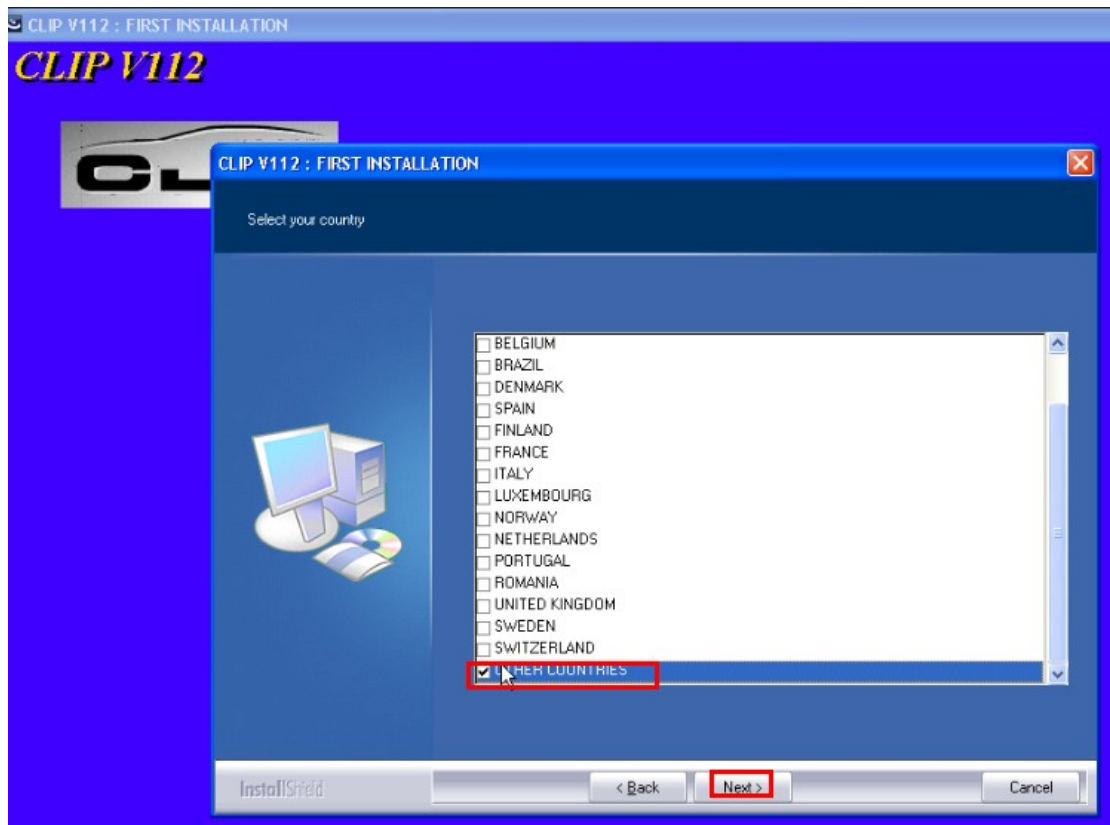


2) Open “Renault Can-Chip-112”, then open “Setup”

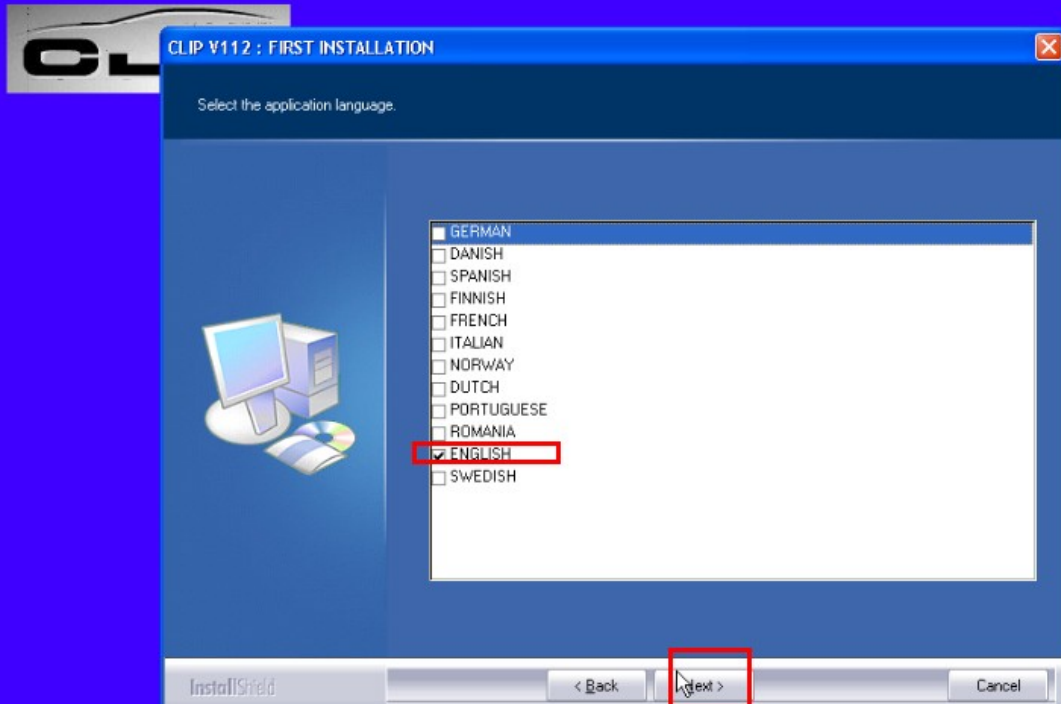




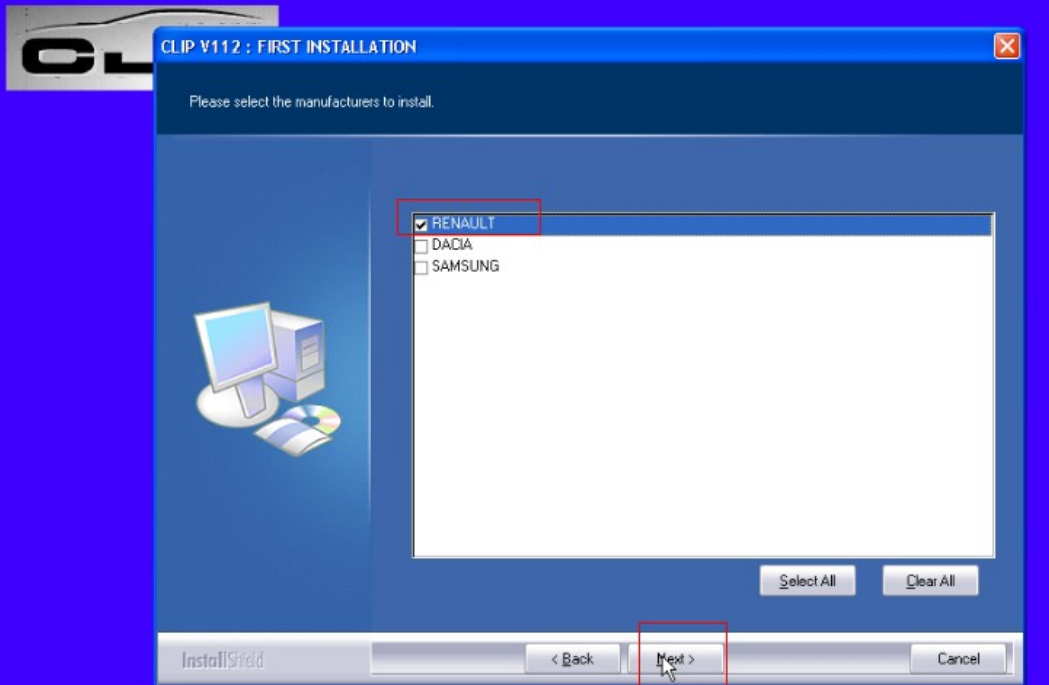
3) Choose the language you want to use



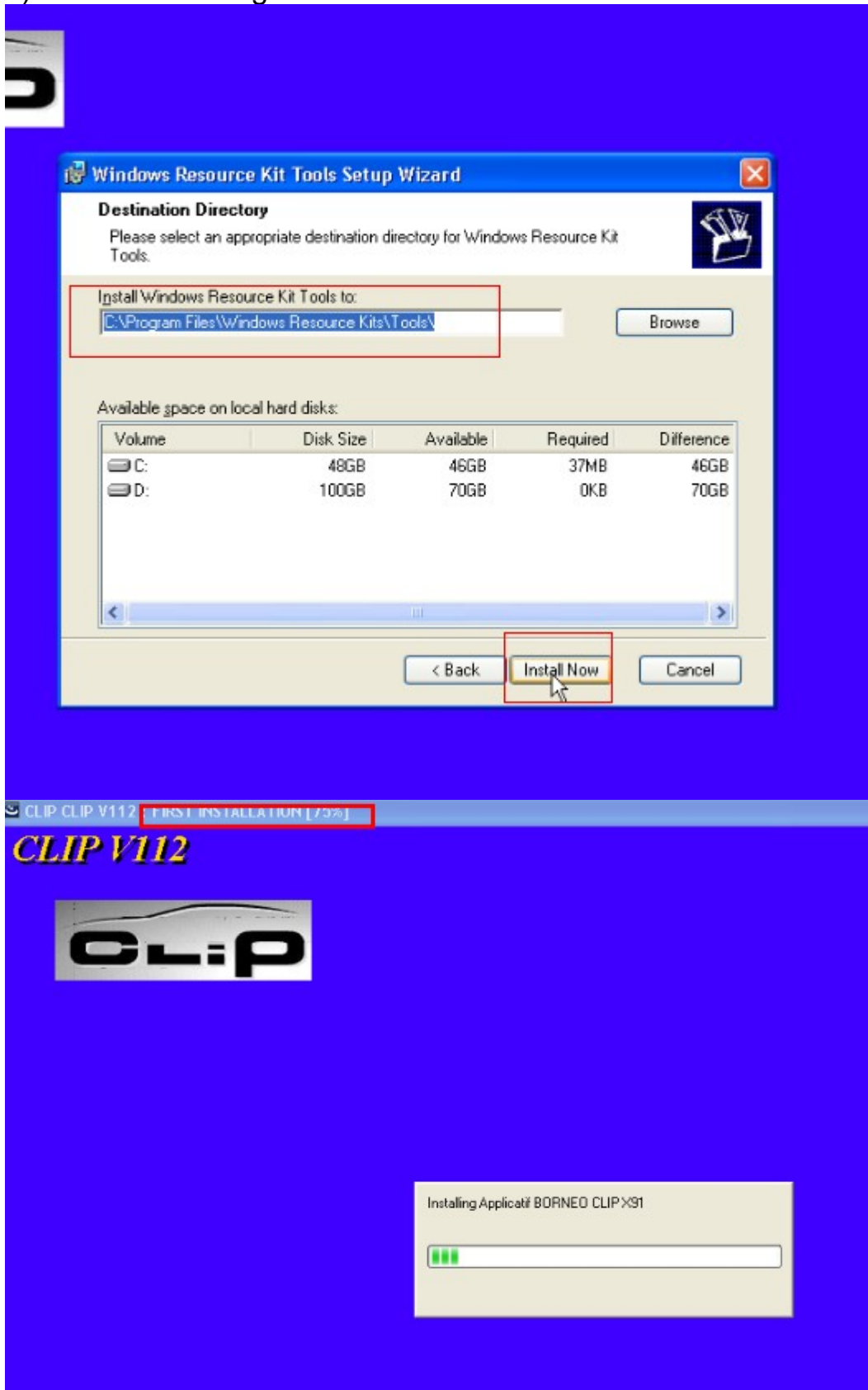
CLIP V112

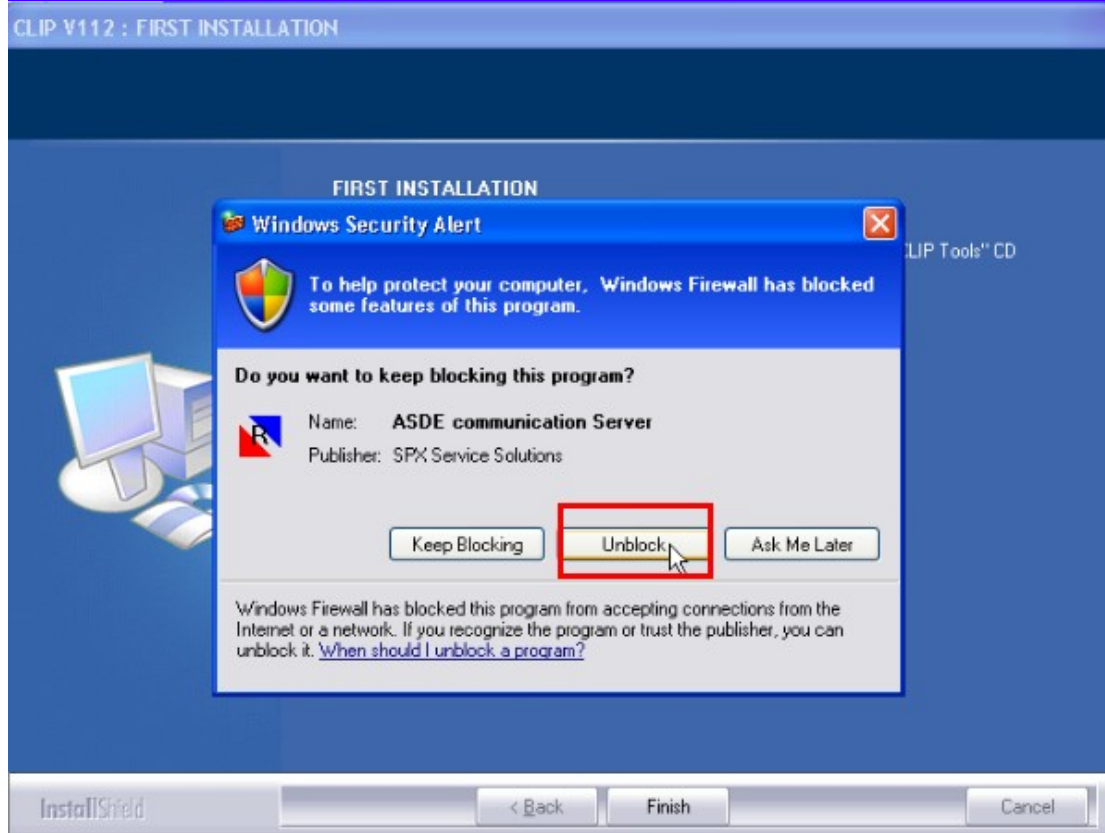
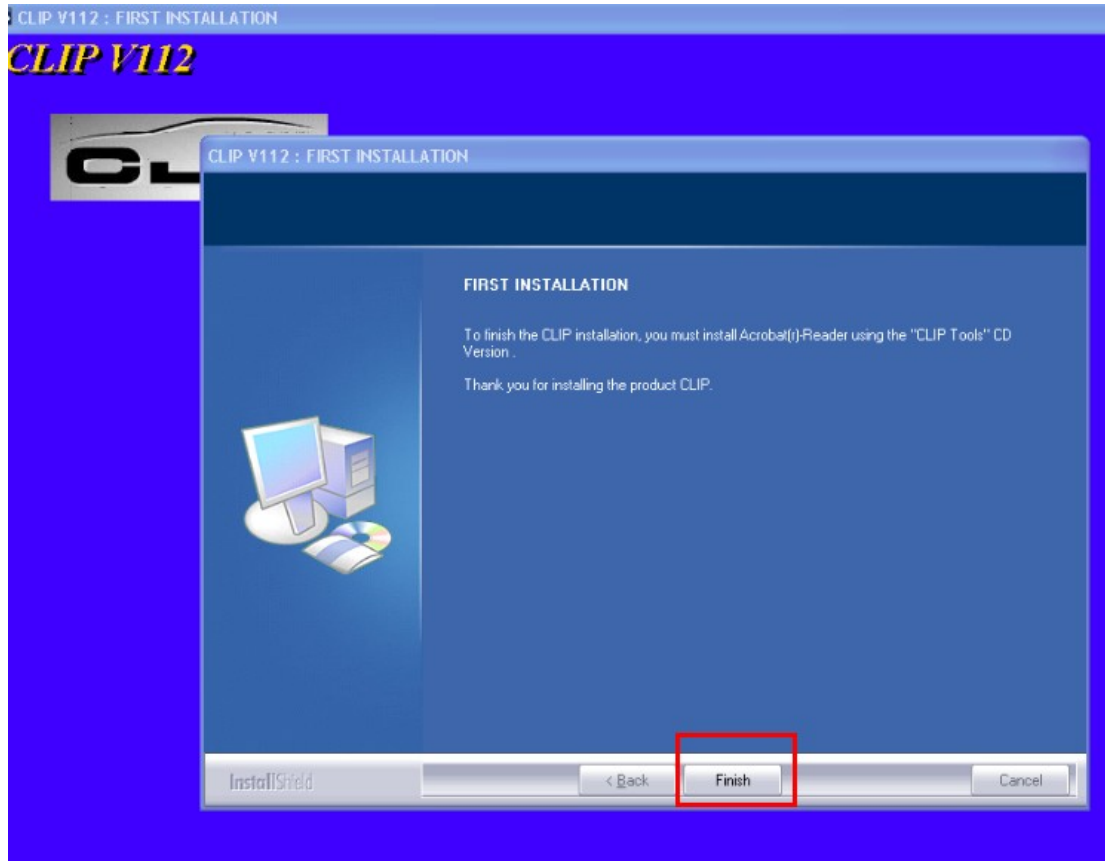


CLIP V112

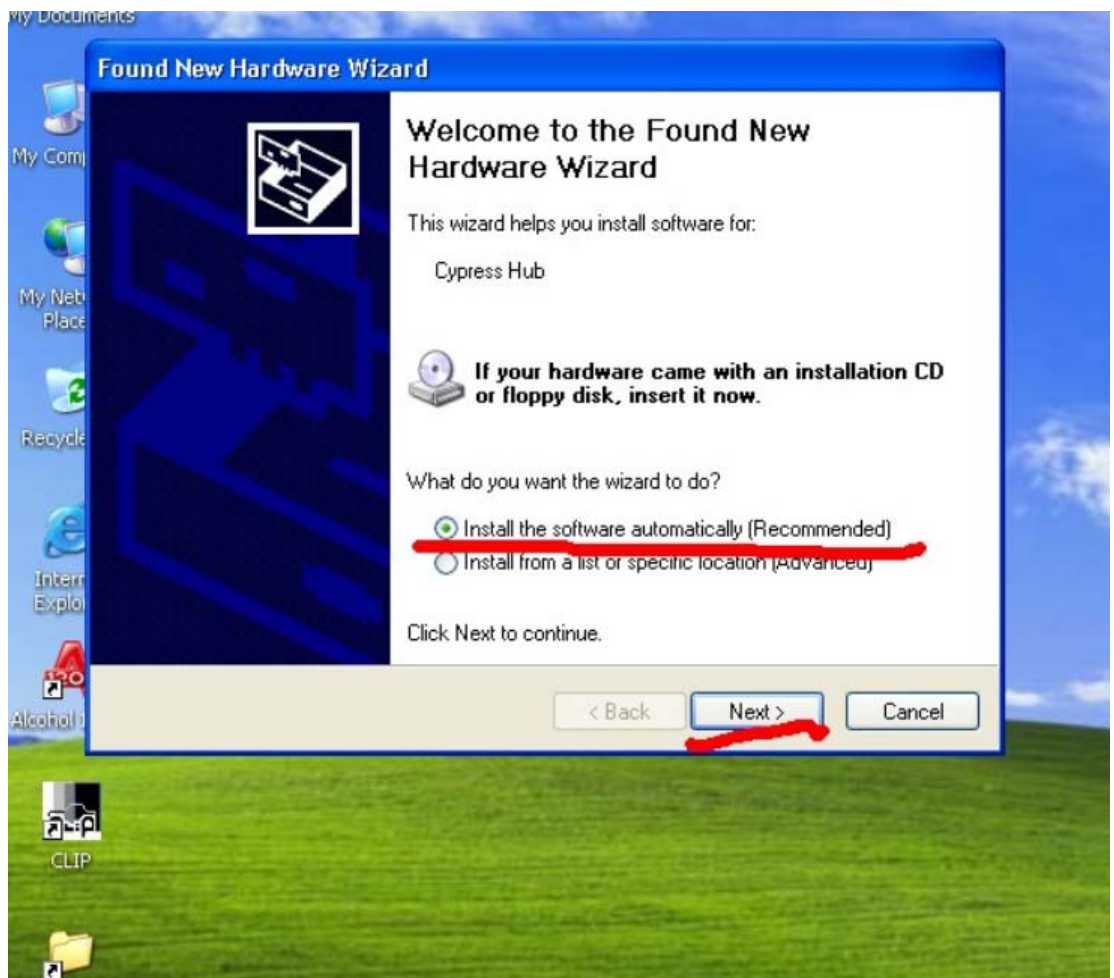


4) the software begins to install





5) after software installation finish, insert Renault Can Clip 16pin interface into Renault car OBD diagnostic socket, and connect Renault Can Clip COM Port to computer USB port.



Found New Hardware Wizard



Welcome to the Found New Hardware Wizard

This wizard helps you install software for:

JCAE CAN AVANT RENUMERATION



If your hardware came with an installation CD or floppy disk, insert it now.

What do you want the wizard to do?

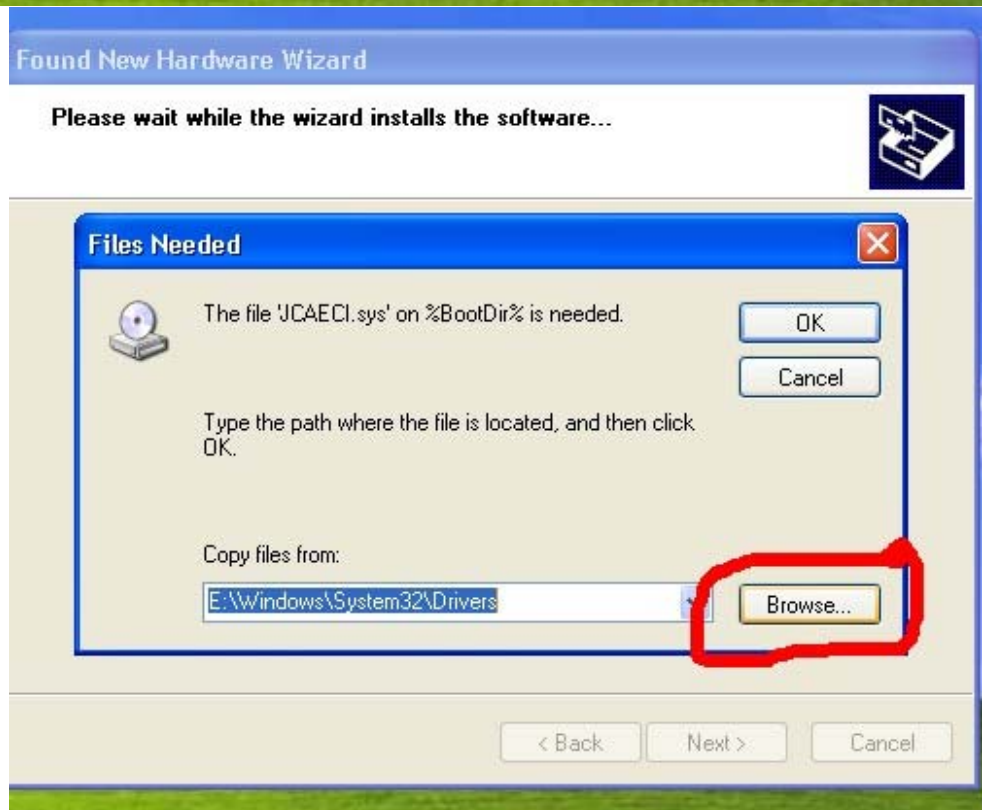
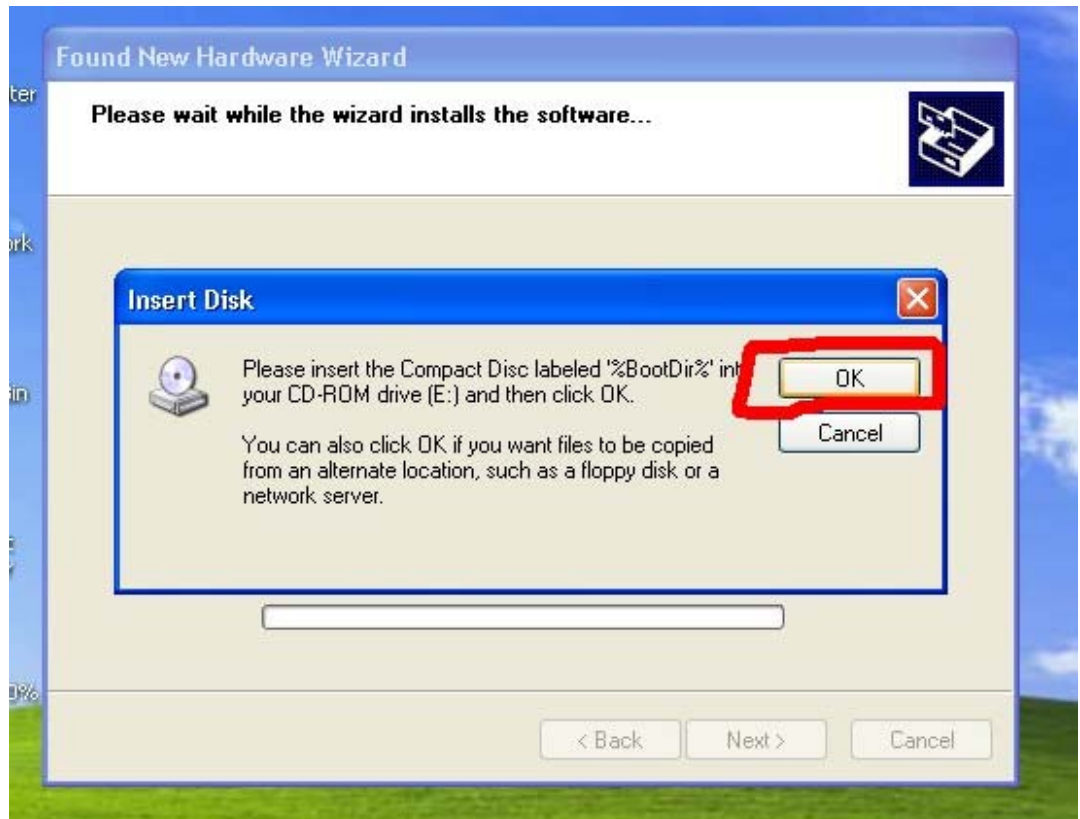
- Install the software automatically (Recommended)
- Install from a list or specific location (Advanced)

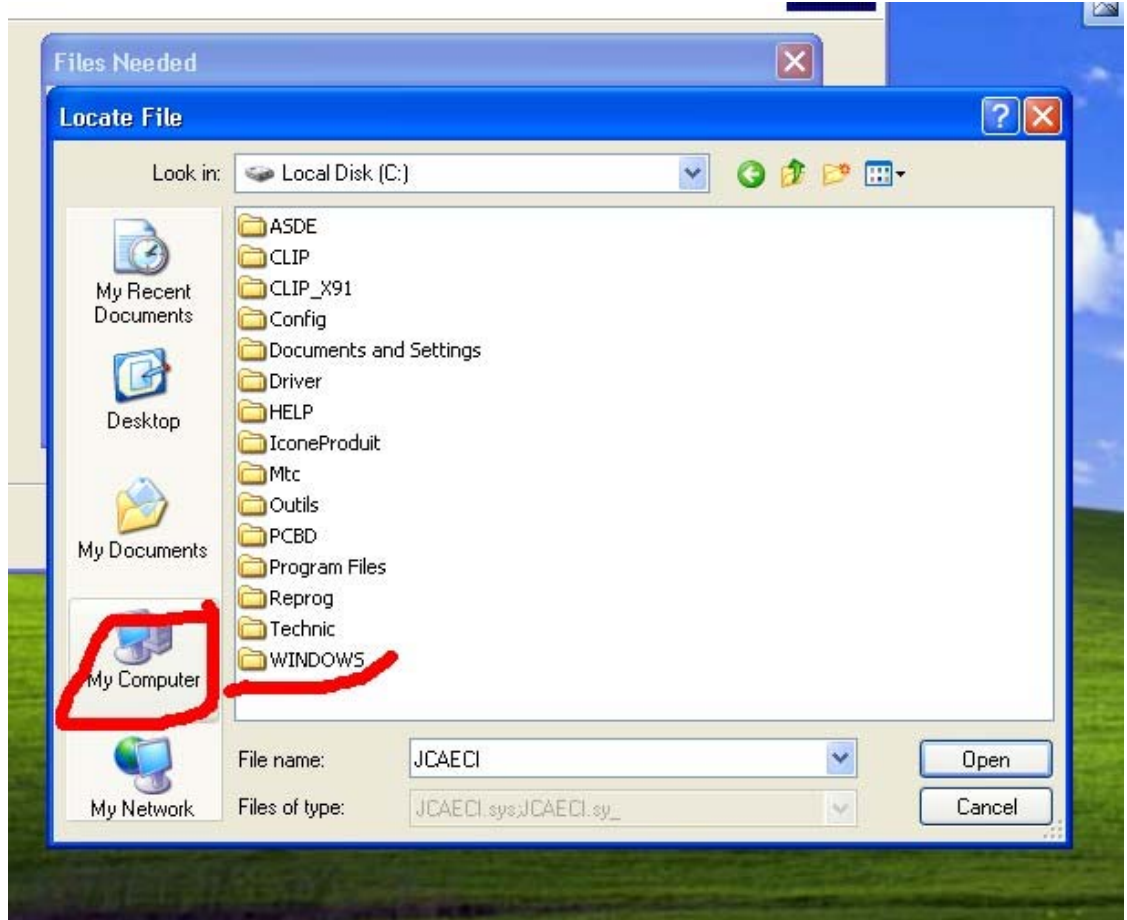
Click Next to continue.

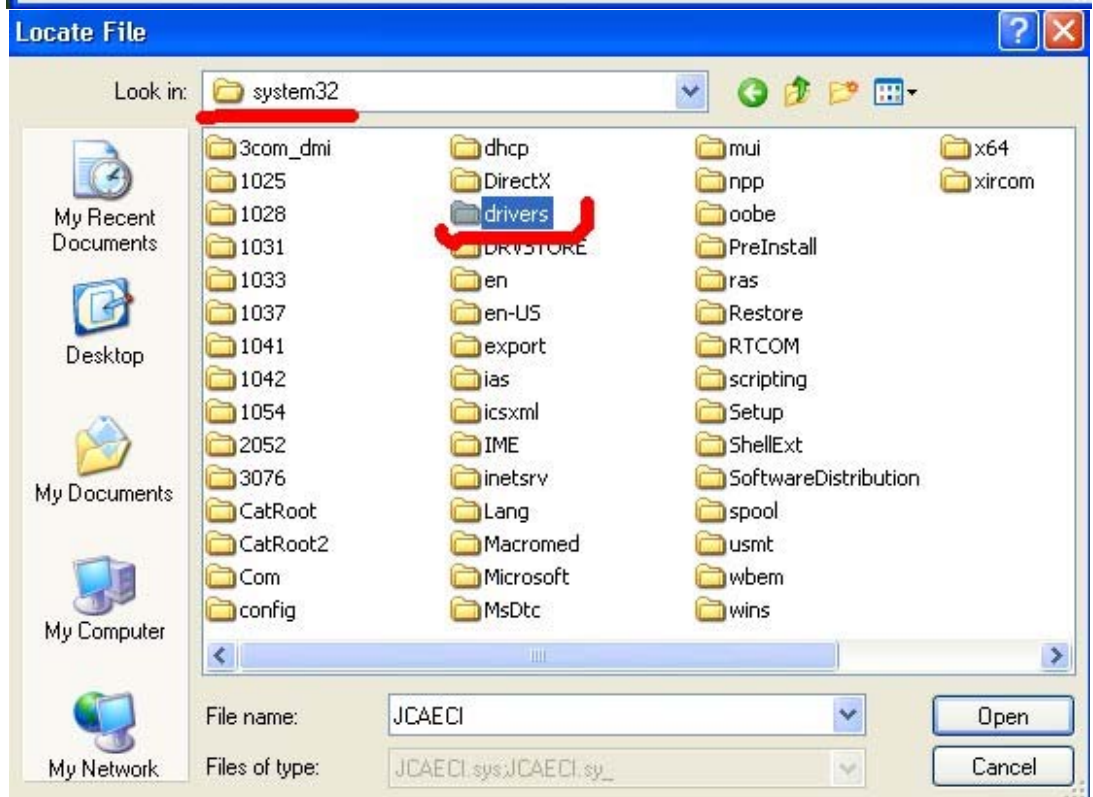
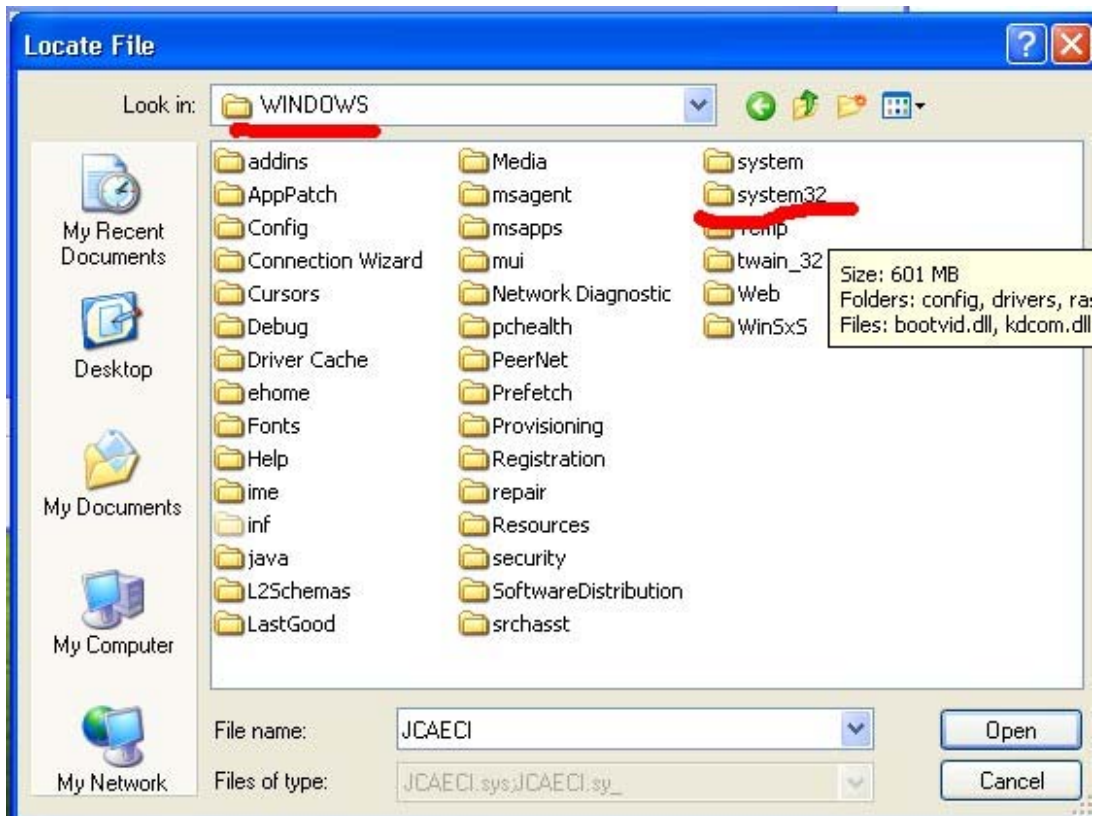
< Back

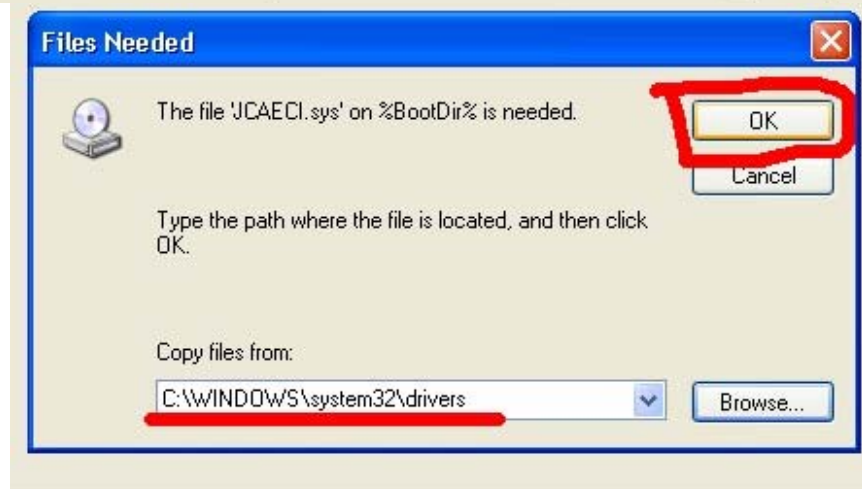
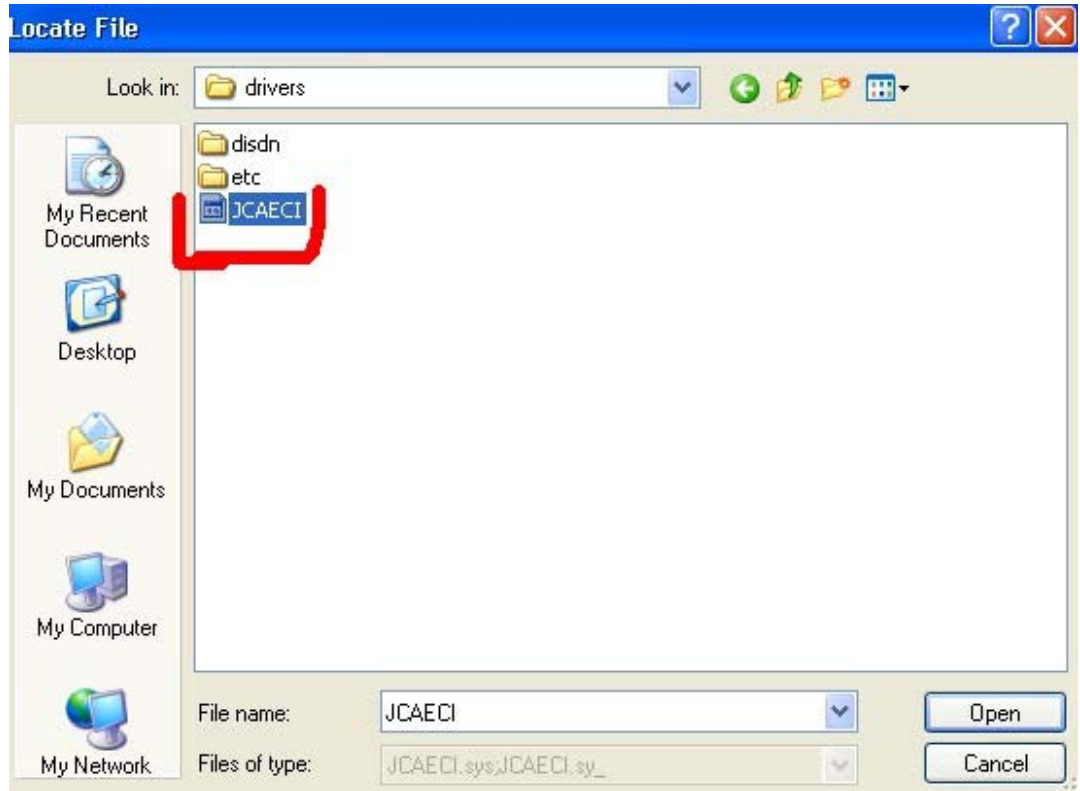
Next >

Cancel



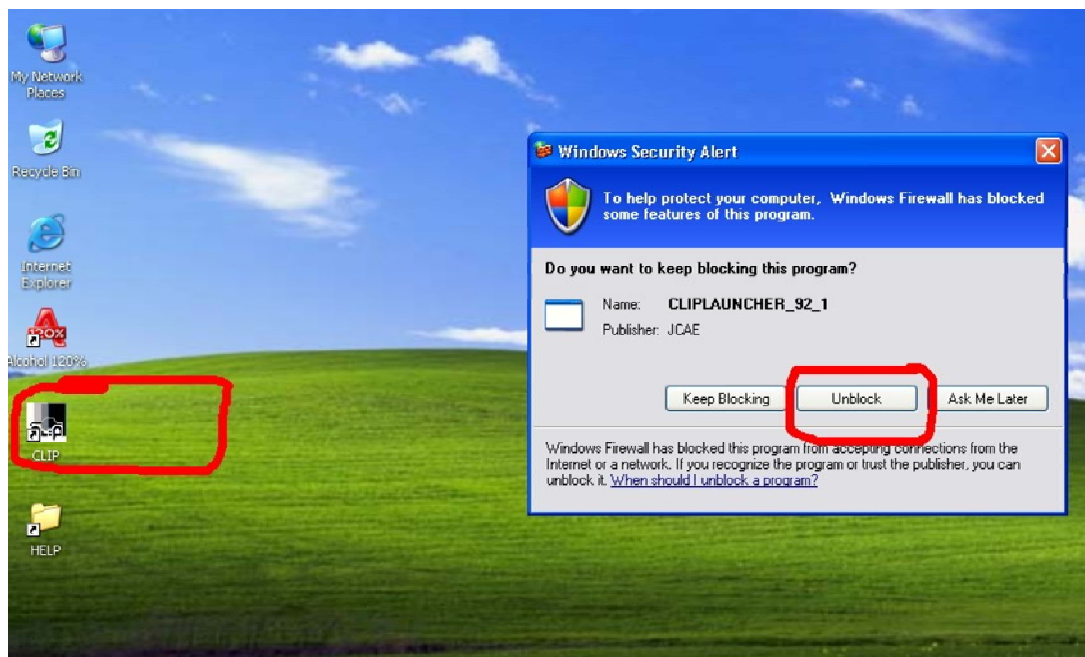




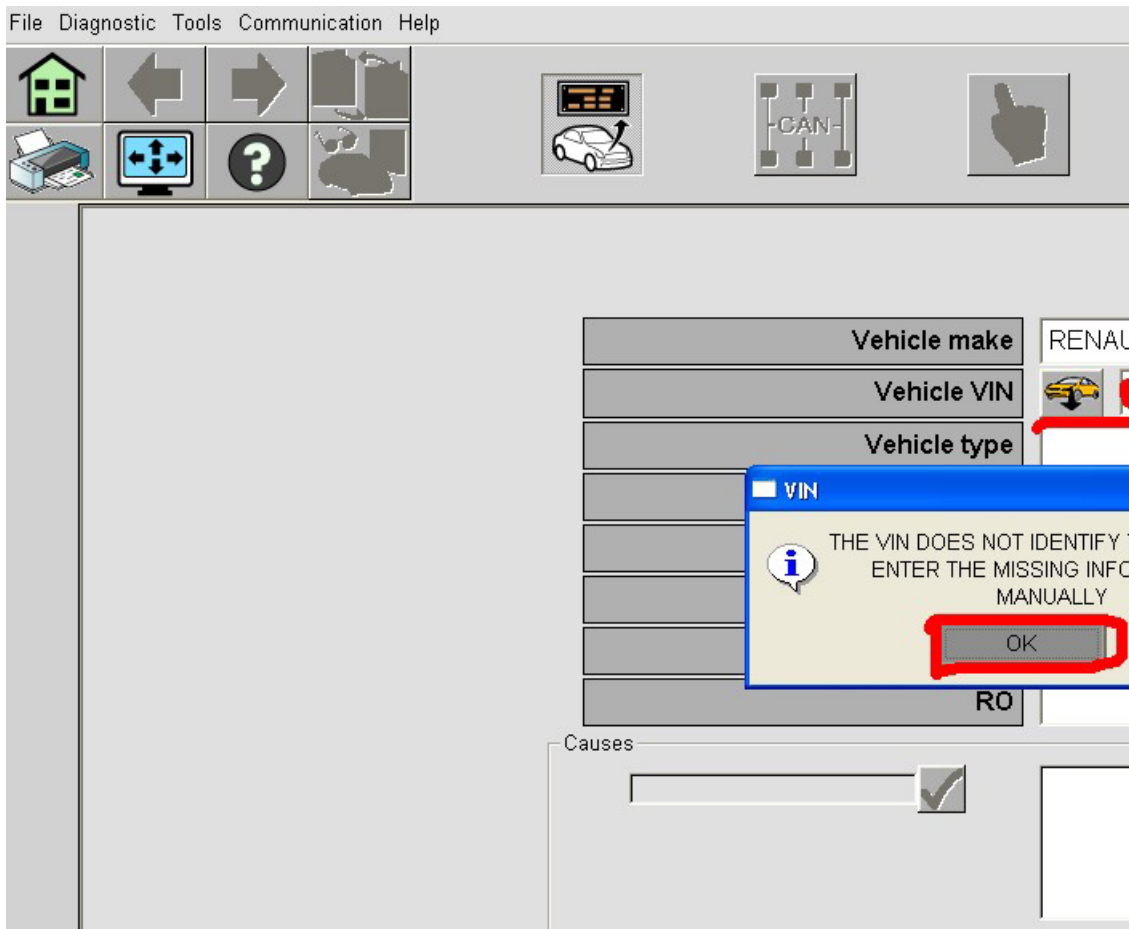
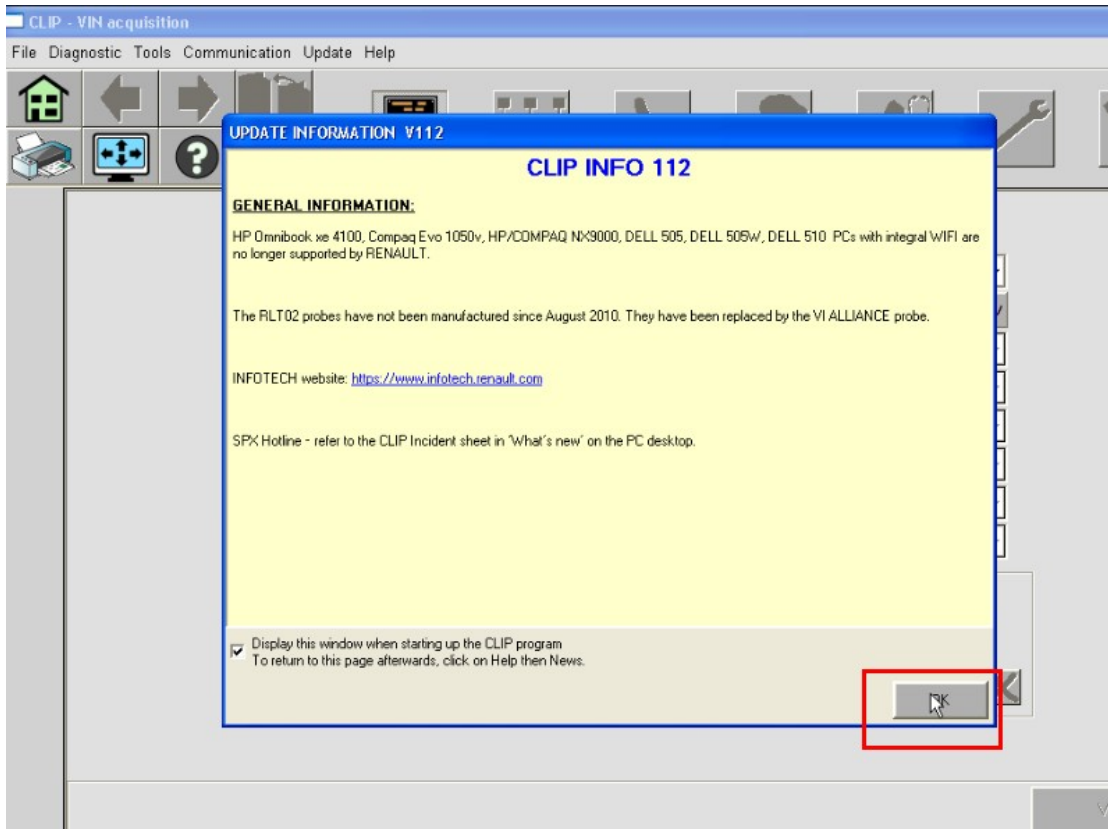


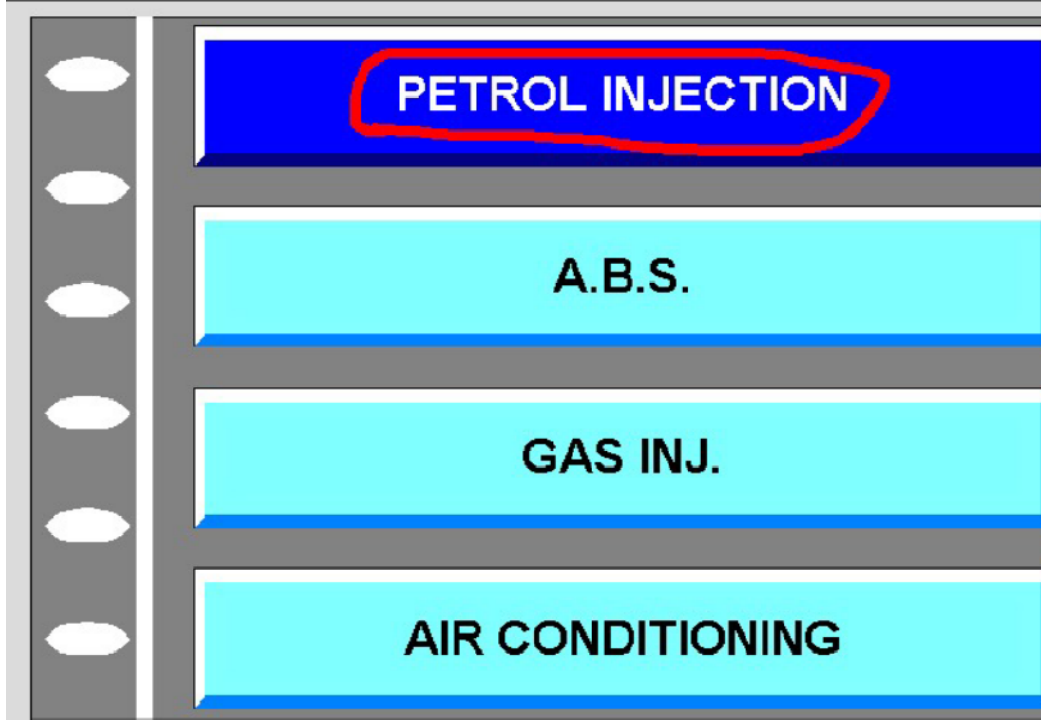
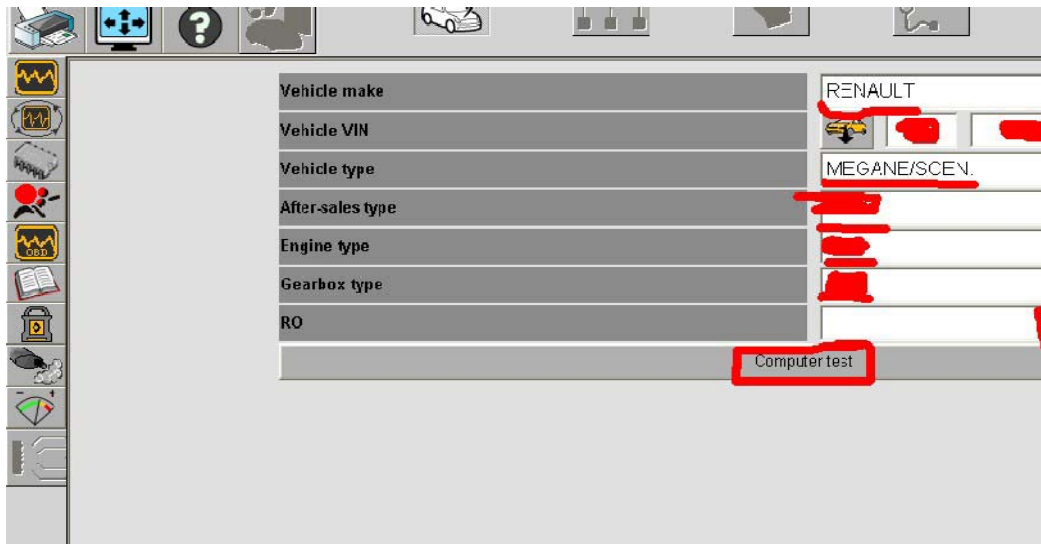


6) driver installation finish



7) open the software to starts to diagnose Renault cars.





C060

COMPUTER TEST

COMPUTER IDENTIFICATION

FAULTS TEST

LIST OF DETECT

LIST OF PARAMETERS

FUNCTION

LIST OF STATUSES

CONFORMI

COMMAND MODE

TESTS PER
COMPI

DIAGNOSTIC SHEET

STATUSES AND
RECOF

TEST WITH ENGINE STOPPED AND THEN RUN

| | |
|-------|----------------------------------|
| DF004 | WATER TEMPERATURE SENSOR CIRCUIT |
| DF045 | MANIFOLD PRESSURE SENSOR CIRCUIT |
| DF060 | IDLE REGULATION CIRCUIT |
| DF002 | THROTTLE POTENTIOMETER CIRCUIT |

| | |
|-------------------------|---------|
| STATUSES AND PARAMETERS | ERASING |
|-------------------------|---------|

| | | | | |
|---|---|---|---|---|
|  |  |  |  |  |
|---|---|---|---|---|

8) finish diagnosis